



# INSTALLATION INSTRUCTIONS FOR PARAPET BACK LADDER HAND GRAB RAIL

---

Patented or Patent Pending  
Made in America

**THIS INSTALLATION MUST BE COMPLETED PRIOR TO HAND GRAB RAIL/LADDERPORT SAFETY  
SUPPORT INSTALLATION**

**PAGE 1**

---

## **SYSTEM INSTALLATION INSTRUCTIONS PARAPET BACK LADDER HAND GRAB RAIL**

**IMPORTANT: READ ALL SAFETY INSTRUCTIONS AND WARNINGS PRIOR TO BEGINNING INSTALLATION**

### **WARNING:**

- Always consult with a licensed architect or structural engineer for proper attachment to each building.
- Always follow all OSHA safety procedures.
- Always check all building codes prior to performing any building modification.
- Prior to beginning installation follow proper OSHA fall protection procedures, i.e. harness, lanyard, tie-off, etc.

**INSTALLERS SHOULD REVIEW ENTIRE INSTALLATION PROCEDURE BEFORE STARTING INSTALLATION.**

### **BACK LADDER HAND GRAB RAIL INSTALLATION**

1. Make sure Back Ladder is securely installed and steps are level.
2. Place Hand Grab Rail on main side member of Back Ladder with top U channel above top step. If necessary, tap U channel in place. It is designed to fit tightly.
3. Utilizing supplied drill, drill one 9/32" through hole on the outside of top U channel. Install included self tapping bolt applying firm pressure. Do not over tighten, which may cause threads to strip.
4. As in Step 3 above, drill one hole on the lower U channel on the inside of Back Ladder and install included self threading bolt as before.
5. Complete installation by drilling two remaining bolt holes – one each in top and bottom U channels and installing self tapping bolts.

**Note: See Directions for Installing Hand Grab Rail/Back Ladder Wall Support. All Back Ladders with Hand Grab Rails must have this installed for a safe, rigid installation. Do not attempt to use Back Ladder until the proper Support item has been installed.**

### **ITEMS INCLUDED WITH HAND GRAB RAIL**

- 1 – Hand Grab Rail
- 4 – 5/16" Self Tapping Bolts (Extras may be included)
- 1 – 9/32" Drill Bit

For Installation Questions or Additional Orders Call 800-770-8851

Monday – Friday / 8:00 AM to 5:00 PM EST or e-mail us at [sales@ladderport.com](mailto:sales@ladderport.com).  
Back Ladder System /Grab Rail System should not be used for anything other than its intended purposes.  
Always check state and local building codes prior to installation on any building.

### **LadderTech L.L.C.**

7081 Dan McGuire Drive • Brighton, Michigan 48116  
Toll Free: (800) 770-8851 • Local: (248) 437-7100 Fax: (248) 486-2600  
Email: [sales@ladderport.com](mailto:sales@ladderport.com) • Web Site: [www.ladderport.com](http://www.ladderport.com)



Patented or Patent Pending  
Made in America

## **INSTALLATION INSTRUCTIONS**

### **HAND GRAB RAIL/BACK LADDER WALL SUPPORT**

**(For Back Ladder Installations with NO LadderPort)**

---

After Back Ladder is installed, install Back Ladder Wall Support at the lowest point possible. (See Drawing ).

1. Install mounting receiver on Back Ladder using included 9/32 Drill and 5/16 self tapping bolts.
2. Place Back Ladder in position making sure foot plate is solidly on the roof. Facing the wall, measure the distance from the end of Mounting Receiver to the wall and add 3" to the measurement. (See Measurement A on Drawing 3) .
3. Cut included Wall Support Bar to above measurement.
4. Lift Back Ladder and insert Wall Support Bar in Receiving Mount with mounting tab in best position for anchoring. Set Back Ladder back on roof. Mount Wall Support Bar to wall using an adequate anchor for your specific application.
5. Once Wall Support Bar is mounted to wall, make sure Mounting Receiver and Wall Support Bar are fit together properly. Holding Receiver and Support together and using hole on Mounting Receiver drill hole through Wall Support Bar using included 9/32 drill. Insert included 5/16 self tapping bolt into drilled hole. Do not over tighten. Test Wall Support for rigidity.

#### **Items Included with Hand Grab Rail/Back Ladder Safety Support**

- 1 – Mounting Receiver
- 1 - Wall Support Bar
- 7 – 5/16" (5/8") Self Tapping Bolts (Extra bolts maybe included)
- 1 – 9/32" Drill Bit

n

#### **LadderTech L.L.C.**

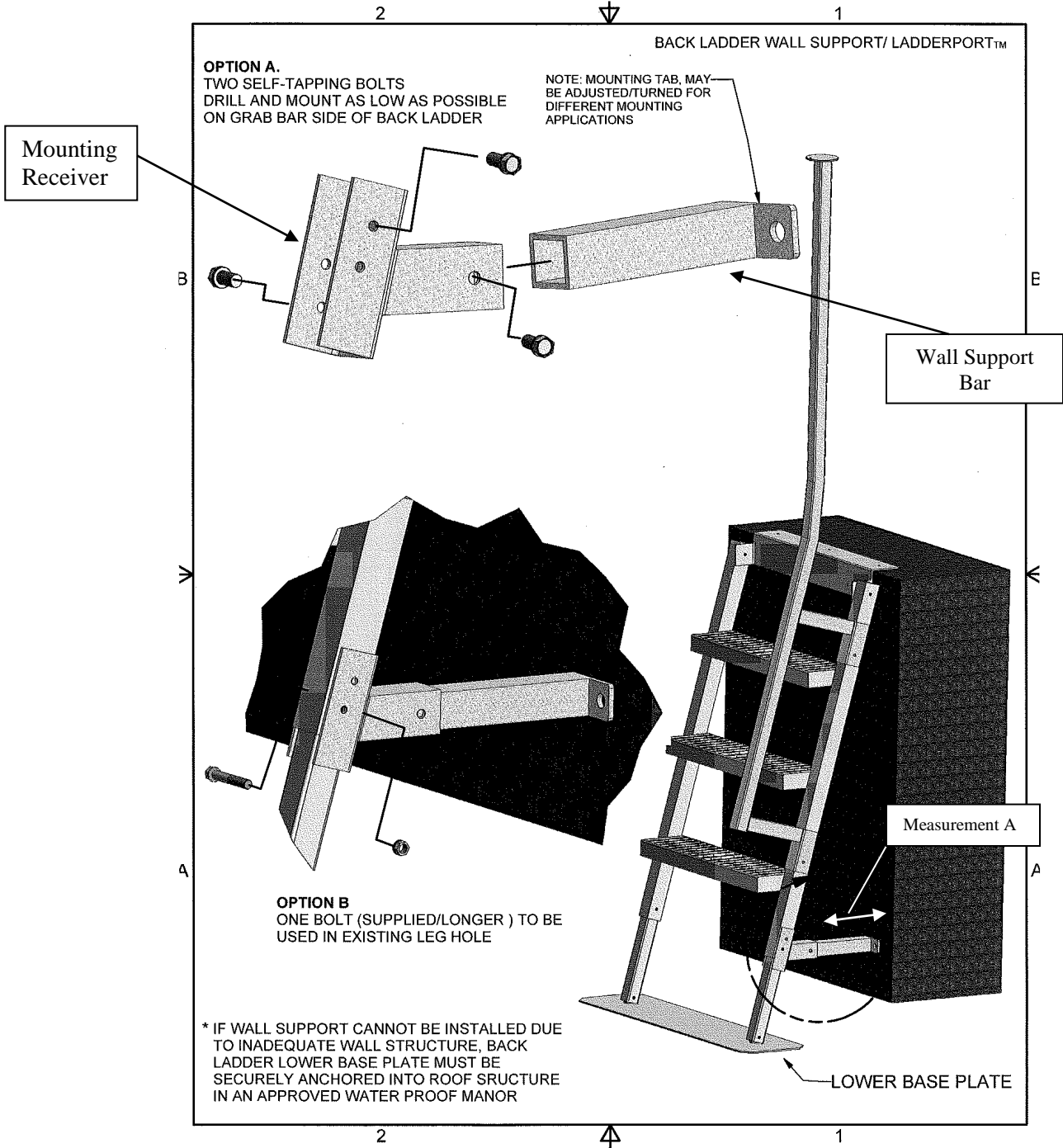
7081 Dan McGuire Drive • Brighton, Michigan 48116  
Toll Free: (800) 770-8851 • Local: (248) 437-7100 Fax: (248) 486-2600  
Email: [sales@ladderport.com](mailto:sales@ladderport.com) • Web Site: [www.ladderport.com](http://www.ladderport.com)



Patented or Patent Pending  
Made in America

# HAND GRAB RAIL/BACK LADDER WALL SUPPORT

## Drawing Back Ladder Wall Support



### LadderTech L.L.C.

7081 Dan McGuire Drive • Brighton, Michigan 48116  
Toll Free: (800) 770-8851 • Local: (248) 437-7100 Fax: (248) 486-2600  
Email: [sales@ladderport.com](mailto:sales@ladderport.com) • Web Site: [www.ladderport.com](http://www.ladderport.com)



Patented or Patent Pending  
Made in America

<p style="text-align: center;"><b>INSTALLATION INSTRUCTIONS</b> <b>HAND GRAB RAIL SAFETY SUPPORT</b> <b>(For Back Ladder Installations WITH Grab Rail to Grab Rail)</b></p>
---

1. Mount Grab Rails on both back ladders and measure distance between the two Grab Rails. (See Drawing 4).
2. Cut safety support bar to approximately 1/4" less than above measurement.
3. Place the support bar and support receiver together and fit between two Grab Rails. It may be necessary to tilt the bar to position it. Move Support Bar and Support Receiver to the highest level available on Grab Rails.
4. With Mounting Receiver in proper position mark holes for drilling and drill the receiving end using included 9/32 drill. Fasten using the 2 included 5/16" bolts do not over tighten.
5. Making sure the Support Bar is level mark and drill the remaining end. Fasten both sides of the Bar using the included 5/16" bolt.
6. Using 9/32" drill and 5/16" self tapping bolt included in kit, lock the Support Receiver and the Support Bar together. Do Not Overtighten.

**Items Included with Hand Grab Rail/Back Ladder Safety Support**

- 1 – Mounting Receiver
- 1 - Support Bar
- 9 – 5/16" (5/8") Self Tapping Bolts (Extra bolts maybe included)
- 1 – 9/32" Drill Bit

**LadderTech L.L.C.**

7081 Dan McGuire Drive • Brighton, Michigan 48116  
Toll Free: (800) 770-8851 • Local: (248) 437-7100 Fax: (248) 486-2600  
Email: [sales@ladderport.com](mailto:sales@ladderport.com) • Web Site: [www.ladderport.com](http://www.ladderport.com)

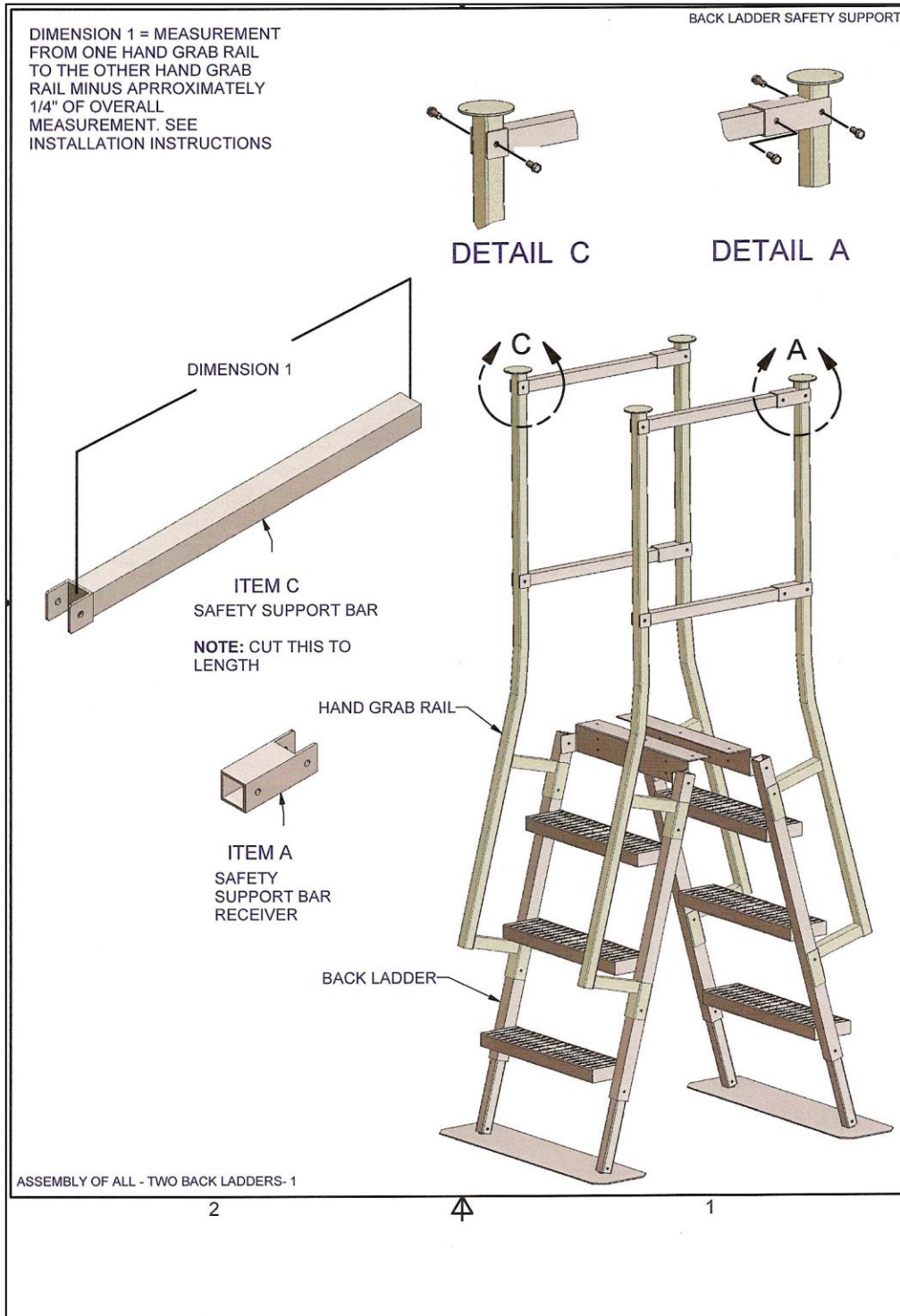


Patented or Patent Pending  
Made in America

# Drawing 4

## HAND GRAB RAIL SAFETY SUPPORT (For Back Ladder Installations WITH Grab Rail to Grab Rail)

### HAND GRAB RAIL SAFETY SUPPORT





Patented or Patent Pending  
Made in America

## WARRANTY AND RETURN POLICY

### WARRANTY

LadderTech, LLC (hereinafter referred to as LadderTech) guarantees our products are free of defects in workmanship and material. Such warranty is in effect for one year from date of purchase. Warranty excludes minor defects in material coatings (i.e. galvanizing, powder coating and other like coatings).

In the unlikely event, a defective product is shipped LadderTech must be notified in writing immediately upon receipt of receiving the defective product. If notification of receipt of defective product is not received within 30 days of receipt of product, LadderTech reserves the right to void the warranty. If, in the sole opinion of LadderTech the product is determined to be defective, LadderTech's obligation is limited to replacement of the defective product with a like product of equal or greater value.

LadderTech products must not have been subject to accident; misuse, abuse or use contrary to the instructions provided in the instruction manuals or contrary to the reasonable intended use of the products. This warranty covers only defects arising from the workmanship, construction and material involved in the manufacturing of the product. This warranty does not cover defects arising from deterioration due to normal wear and tear, the use of the product in a manner other than as instructed in the installation manual or modification of product, design, improper installation, neglect, lack of routine maintenance or unauthorized repairs. LadderTech assumes no responsibility or has no control over nicks, cuts, scratches or any other normal wear and tear during any consumer's usage. Incidental, indirect, special, or consequential damages are excluded in this warranty. Any determination by LadderTech with respect to such matters shall be final.

LadderTech makes no other warranty, expressed or implied, to the merchantability, fitness for a particular purpose, design, sale, installation, or use, of our products; and shall not be liable for incidental or consequential damages, losses of or expenses, resulting from the use of our products. Many states and localities have codes and regulations governing sales, construction, installation, and/or use of products for certain purposes, which may vary from those in neighboring areas. While LadderTech attempts to assure that its products comply with such codes, it cannot guarantee compliance, and cannot be responsible for how the product is installed or used. Before purchase and use of a product, please review the product application, and national and local codes and regulations, to be sure that the product, installation, and use will comply with them.

LadderTech accepts no responsibility for actions caused by improper use of our products or for use other than its intended purpose. It is user's responsibility to inspect product for usability, stability, and complete routine inspections and maintenance on an ongoing basis. Although every effort has been made to use the longest lasting fittings and installation materials, as with all metal products, over time, screws, bolts, etc. corrode, loosen and rust and must be routinely inspected and maintained, which includes but is not limited to tightening, repair or replacement as necessary.

EXCEPT TO THE EXTENT PROHIBITED BY APPLICABLE LAW, NO OTHER WARRANTIES OR CONDITIONS, WHETHER EXPRESS OR IMPLIED, WRITTEN OR ORAL, INCLUDING WARRANTIES OF MERCHANTABILITY AND FITNESS FOR A PARTICULAR PURPOSE, SHALL APPLY TO Laddertech PRODUCTS; UNDER NO CIRCUMSTANCES SHALL Laddertech, LLC BE LIABLE FOR SPECIAL, INDIRECT, INCIDENTAL OR CONSEQUENTIAL DAMAGES SUSTAINED IN CONNECTION WITH OUR PRODUCTS AND Laddertech, LLC NEITHER ASSUMES NOR AUTHORIZES ANY REPRESENTATIVE OR OTHER PERSON TO ASSUME FOR IT ANY OBLIGATION OR LIABILITY OTHER THAN SUCH AS IS EXPRESSLY SET FORTH HEREIN. THIS WARRANTY GIVES A PURCHASER OF Laddertech, LLC PRODUCTS SPECIFIC LEGAL RIGHTS, WHICH MAY VARY FROM PROVINCE TO PROVINCE, AND STATE TO STATE.

### RETURNS

Upon inspection, returns that are deemed resalable are subject to a 25% restocking fee. No returns accepted on used, special order or custom built items. Returns must be made within 30 days of INVOICE date to be eligible for any refund. No credit will be given for returns that are determined not to be resalable. Any determination by LadderTech, LLC with respect to such matters shall be final. Buyer is responsible for *all* freight charges.

### **LadderTech L.L.C.**

7081 Dan McGuire Drive • Brighton, Michigan 48116  
Toll Free: (800) 770-8851 • Local: (248) 437-7100 Fax: (248) 486-2600  
Email: [sales@ladderport.com](mailto:sales@ladderport.com) • Web Site: [www.ladderport.com](http://www.ladderport.com)