

ROOF HATCH GRAB BAR*

INSTALLATION INSTRUCTIONS



1 OF 10

8 RHGB Install / 20070523

LadderTech L.L.C.

7081 Dan McGuire Drive • Brighton, Michigan 48116

Toll Free: (800) 770-8851 • Local: (248) 437-7100 Fax: (248) 486-2600

Email: sales@ladderport.com • Web Site: www.ladder-port.com or www.ladderport.com

*Patent US 8,099,910 B1



YOUR ROOF ACCESS & LADDER SAFETY SOURCE!
MADE IN THE USA

IMPORTANT INFORMATION:

- ◆ READ ALL INSTRUCTIONS AND WARNINGS PRIOR TO BEGINNING INSTALLATION
- ◆ ALWAYS CHECK ALL CODES PRIOR TO PERFORMING ANY BUILDING MODIFICATION
- ◆ FOLLOW ALL OSHA SAFETY RULES
- ◆ **FULL** OSHA Compliance Requires a Cage around Roof Hatch, Gate is also required if the hatch will be left open while working.

For Installation Questions or Additional Orders Call:

800-770-8851

MONDAY – FRIDAY / 8:00 AM TO 5:00 PM EST OR E-MAIL US AT
sales@ladderport.com

2 OF 10

8 RHGB Install / 20070523

LadderTech L.L.C.

7081 Dan McGuire Drive • Brighton, Michigan 48116

Toll Free: (800) 770-8851 • Local: (248) 437-7100 Fax: (248) 486-2600

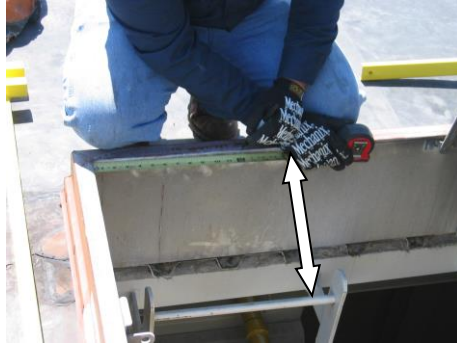
Email: sales@ladderport.com • Web Site: www.ladder-port.com or www.ladderport.com

*Patent US 8,099,910 B1

INSTALLATION INSTRUCTIONS FOR ROOF HATCH GRAB BARS*

ALWAYS FOLLOW ALL OSHA SAFETY RULES, INCLUDING BUT NOT LIMITED TO, PROPER TIE-OFFS, FALL PROTECTION, SAFETY GLASSES, ETC.

STEP 1: Identify centerline of roof hatch ladder and mark top of roof hatch opening.



STEP 2: Center *Roof Hatch Grab Bars/ Center Section* and mark center mounting hole inline with mark made in *Hold Center Section* approximately 1/2" to 1" off roof.



STEP 3: Using included 3/8" *Drill Bit*, drill a hole straight through flashing and roof hatch on the mark made in Step 2.



STEP 4: Install 3/8" Bolt from inside curb using included *Back Up Plate* in lieu of a washer through hole made in Step 3.



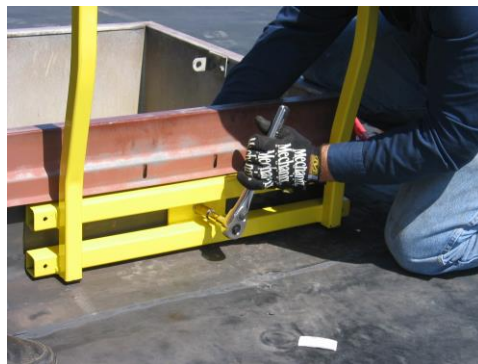
STEP 5: Put a bead of Sealant on *Grab Bar Mounting Plate* as shown.

Note: Sealant squares are included in hardware kit



STEP 6: Use one (1) *Rubber Coated Sealing Washer* and one (1) *Ny-lock Nut* to fasten *Grab Bars* to bolt, installed in Step 4. If needed place *Pressure Treated Wood Spacer* (included) between *Roof Hatch* & *Grab Bar Mounting Plate*. Snug nut making sure *Roof Hatch Center Section* is level.

WARNING: DO NOT COMPRESS INSULATION, SNUG ONLY.



STEP 7: Slide *Side Rails* into
Roof Hatch Grab Bar Center Section

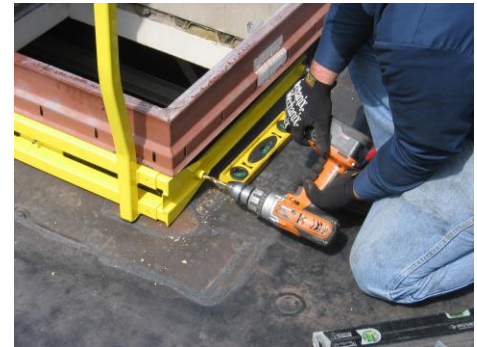
Note: Side sections may require a rubber mallet and
A piece of wood to tap them in. Side sections are
Made to be somewhat tight for rigidity.



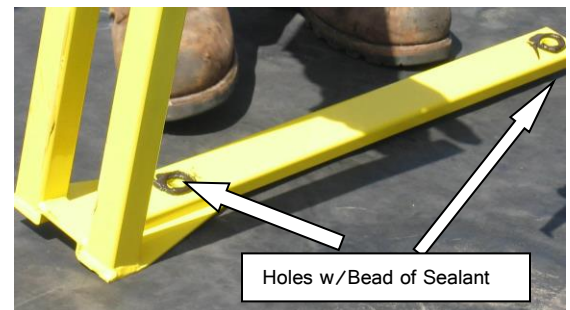
STEP 8: Level *Roof Hatch Grab Bars and Side Rails*. Hold steady while performing STEP 9.



STEP 9: Drill holes through stand-offs on *Side Rails*
and through the curb.



STEP 10: Remove *Side Rails* and put a bead of sealant around
holes or sealant squares in hardware kit, reinstall.



STEP 11: In each of the two (2) holes:

From the *inside* of the curb install a $3/8$ " Bolt and *Back Plate*. Secure on the outside of the curb with *Sealing Washer* and *Ny-lock nut*. Snug only.

See Side Rail Mounting Diagram
Cross Section Drawing Located At End of this Instruction Manual

WARNING: DO NOT OVER-TIGHTEN AS INSULATION DAMAGE MAY RESULT.

Use included *Pressure Treated Wood Spacers* (See Materials Page), if required for counter flashing clearance. Discard if not used.



STEP 12: Repeat Step 11 for opposite side.

WARNING: DO NOT OVER-TIGHTEN BOLTS.

STEP 13: After the main 3/8" Bolts have been installed and snugged up, square up back plates.



Step 14: Install #10 self-drilling screws in all back plate holes.



STEP 15: Utilizing 9/32" Drill Bit (included), drill four (4) holes through main Roof Hatch Grab Bar support rails inner tube.

WARNING: Only drill hole through front side of inner tubing.



STEP 16: Utilizing firm pressure, drive in *Self-tapping 5/16"*
Bolts until snug.

WARNING: Do not over tighten to avoid stripping of
threads.



UPON PROPER COMPLETION OF ALL **STEPS**, YOU SHOULD HAVE A RIGID **ROOF HATCH GRAB BAR**
SYSTEM, DRAMATICALLY ENHANCING ROOF HATCH SAFETY.

For Added Safety and Roof Protection We Recommend:

Roof Pad – 36" X 48" – Protects roof, reduces slipping. Order Yours Today.

Please call us with any questions or comments
800-770-8851.



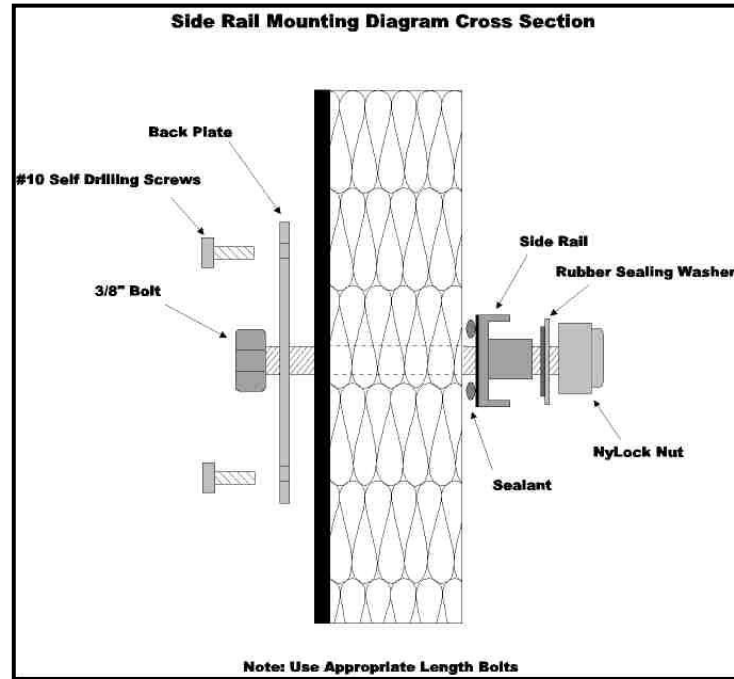
BE SURE TO VISIT OUR WEBSITE
www.ladderport.com

VIEW OUR OTHER UNIQUE AND INNOVATIVE ROOF ACCESS SAFETY PRODUCTS INCLUDING:

INSTALLATION KIT / MATERIALS LIST ROOF HATCH GRAB BARS



| Item # | Description | Qty |
|--------|-------------------------|-----|
| 1 | Grab Bar/Center Section | 1 |
| 2 | Side Rails | 2 |
| 3 | Back Plate | 5 |
| 4 | Side Support Bolt | 5 |
| 5 | Side Support Nut | 5 |
| 6 | Sealing Washer | 5 |
| 7 | Selfdrilling Screw | 20 |
| 8 | Thread Cutting Screw | 4 |
| 9 | 3/8" Drill | 1 |
| 10 | 9/32" Drill | 1 |
| 11 | Front Wood Spacer | 1 |
| 12 | Side Wood Spacer | 2 |
| 13 | Rope Caulk | 40" |





WARRANTY AND RETURN POLICY

WARRANTY

LadderTech, LLC (hereinafter referred to as LadderTech) guarantees our products are free of defects in workmanship and material. Such warranty is in effect for one year from date of purchase. Warranty excludes minor defects in material coatings (i.e. galvanizing, powder coating and other like coatings).

In the unlikely event, a defective product is shipped LadderTech must be notified in writing immediately upon receipt of receiving the defective product. If notification of receipt of defective product is not received within 30 days of receipt of product, LadderTech reserves the right to void the warranty. If, in the sole opinion of LadderTech the product is determined to be defective, LadderTech's obligation is limited to replacement of the defective product with a like product of equal or greater value.

LadderTech products must not have been subject to accident; misuse, abuse or use contrary to the instructions provided in the instruction manuals or contrary to the reasonable intended use of the products. This warranty covers only defects arising from the workmanship, construction and material involved in the manufacturing of the product. This warranty does not cover defects arising from deterioration due to normal wear and tear, the use of the product in a manner other than as instructed in the installation manual or modification of product, design, improper installation, neglect, lack of routine maintenance or unauthorized repairs. LadderTech assumes no responsibility or has no control over nicks, cuts, scratches or any other normal wear and tear during any consumer's usage. Incidental, indirect, special, or consequential damages are excluded in this warranty. Any determination by LadderTech with respect to such matters shall be final.

LadderTech makes no other warranty, expressed or implied, to the merchantability, fitness for a particular purpose, design, sale, installation, or use, of our products; and shall not be liable for incidental or consequential damages, losses of or expenses, resulting from the use of our products. Many states and localities have codes and regulations governing sales, construction, installation, and/or use of products for certain purposes, which may vary from those in neighboring areas. While LadderTech attempts to assure that its products comply with such codes, it cannot guarantee compliance, and cannot be responsible for how the product is installed or used. Before purchase and use of a product, please review the product application, and national and local codes and regulations, to be sure that the product, installation, and use will comply with them.

LadderTech accepts no responsibility for actions caused by improper use of our products or for use other than its intended purpose. It is user's responsibility to inspect product for usability, stability, and complete routine inspections and maintenance on an ongoing basis. Although every effort has been made to use the longest lasting fittings and installation materials, as with all metal products, over time, screws, bolts, etc. corrode, loosen and rust and must be routinely inspected and maintained, which includes but is not limited to tightening, repair or replacement as necessary.

EXCEPT TO THE EXTENT PROHIBITED BY APPLICABLE LAW, NO OTHER WARRANTIES OR CONDITIONS, WHETHER EXPRESS OR IMPLIED, WRITTEN OR ORAL, INCLUDING WARRANTIES OF MERCHANTABILITY AND FITNESS FOR A PARTICULAR PURPOSE, SHALL APPLY TO LadderTech PRODUCTS; UNDER NO CIRCUMSTANCES SHALL LadderTech, LLC BE LIABLE FOR SPECIAL, INDIRECT, INCIDENTAL OR CONSEQUENTIAL DAMAGES SUSTAINED IN CONNECTION WITH OUR PRODUCTS AND LadderTech, LLC NEITHER ASSUMES NOR AUTHORIZES ANY REPRESENTATIVE OR OTHER PERSON TO ASSUME FOR IT ANY OBLIGATION OR LIABILITY OTHER THAN SUCH AS IS EXPRESSLY SET FORTH HEREIN. THIS WARRANTY GIVES A PURCHASER OF LadderTech, LLC PRODUCTS SPECIFIC LEGAL RIGHTS, WHICH MAY VARY FROM PROVINCE TO PROVINCE, AND STATE TO STATE.

RETURNS

Upon inspection, returns that are deemed resalable are subject to a 25% restocking fee. No returns accepted on used, special order or custom built items. Returns must be made within 30 days of INVOICE date to be eligible for any refund. No credit will be given for returns that are determined not to be resalable. Any determination by LadderTech, LLC with respect to such matters shall be final. Buyer is responsible for *all* freight charges.